



# City of Lowell, Michigan

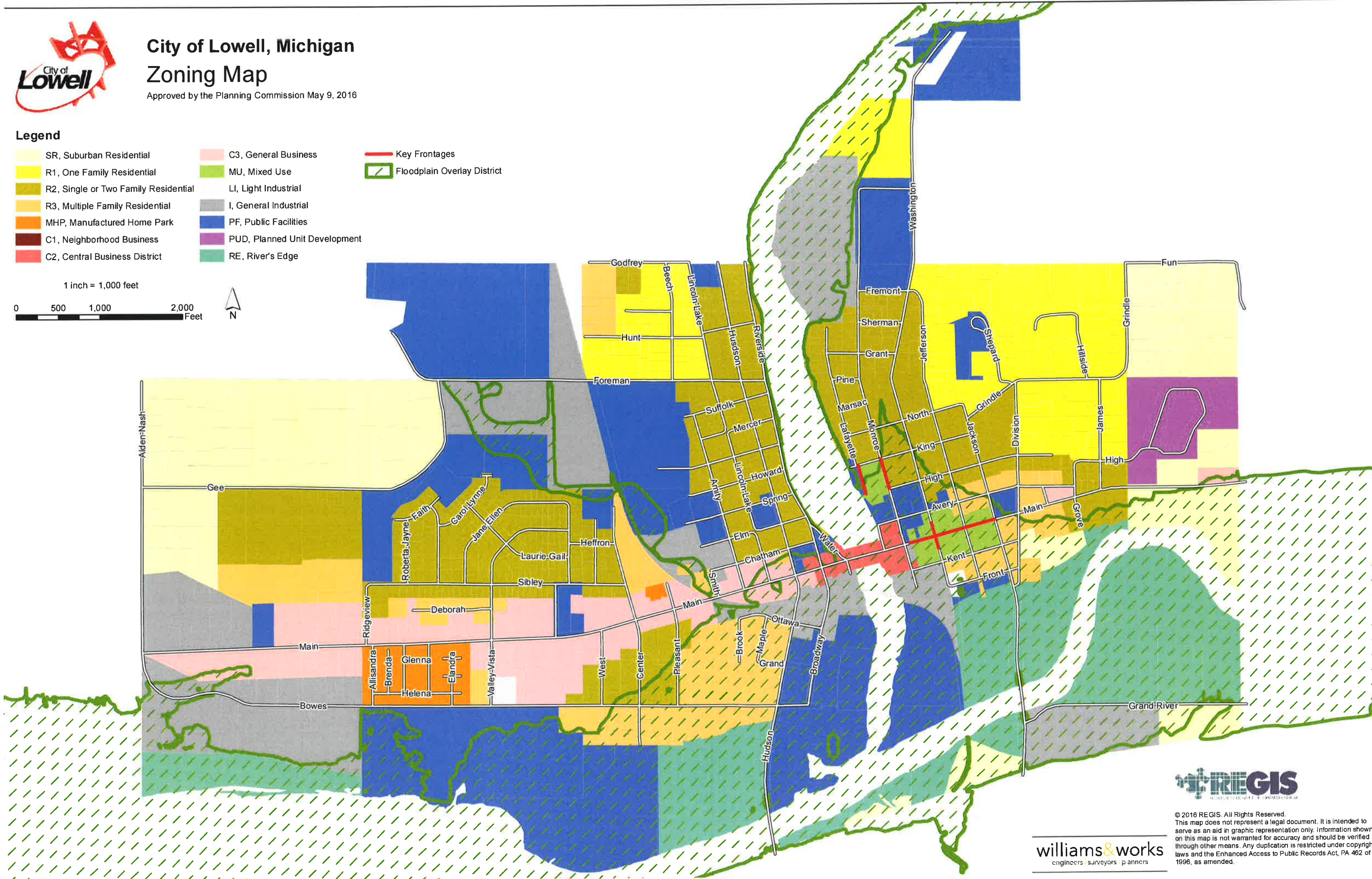
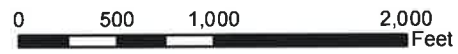
## Zoning Map

Approved by the Planning Commission May 9, 2016

### Legend

- SR, Suburban Residential
- R1, One Family Residential
- R2, Single or Two Family Residential
- R3, Multiple Family Residential
- MHP, Manufactured Home Park
- C1, Neighborhood Business
- C2, Central Business District
- C3, General Business
- MU, Mixed Use
- LI, Light Industrial
- I, General Industrial
- PF, Public Facilities
- PUD, Planned Unit Development
- RE, River's Edge
- Key Frontages
- Floodplain Overlay District

1 inch = 1,000 feet



© 2016 REGIS. All Rights Reserved.  
 This map does not represent a legal document. It is intended to serve as an aid in graphic representation only. Information shown on this map is not warranted for accuracy and should be verified through other means. Any duplication is restricted under copyright laws and the Enhanced Access to Public Records Act, PA 462 of 1996, as amended.

**williams & works**  
 engineers surveyors planners